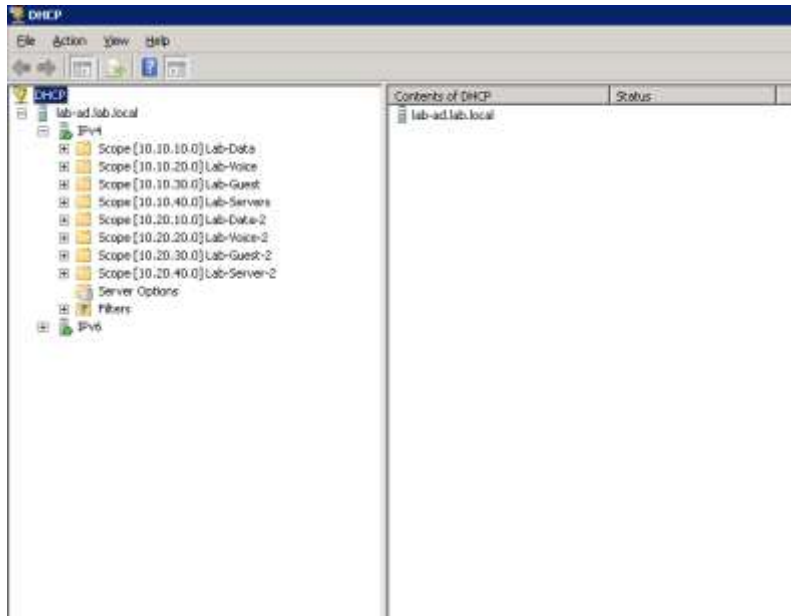
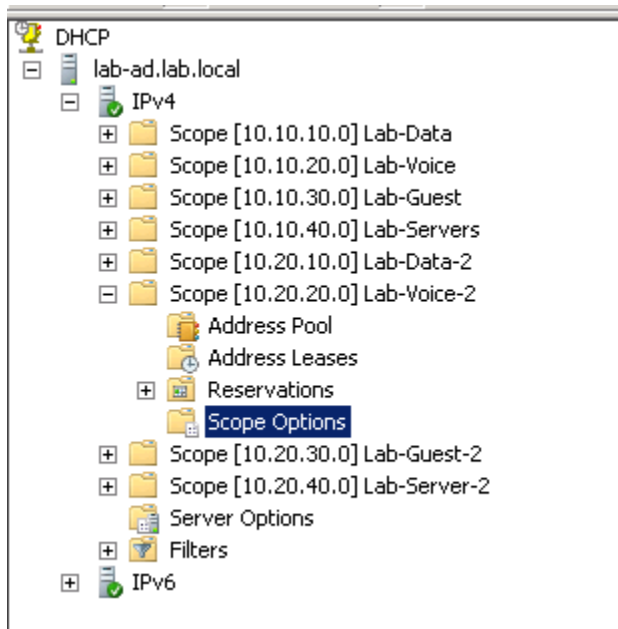


Configuring Option 43 for Ruckus Smart Zone on Windows 2008

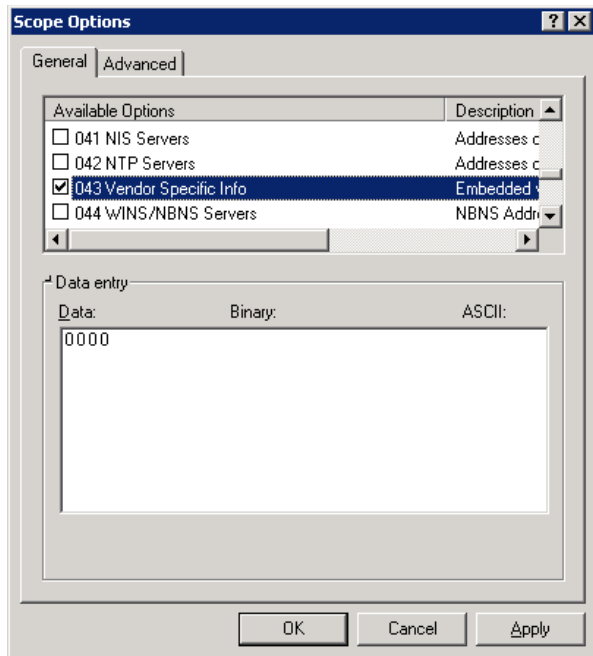
1. Open the DHCP console on the DHCP Server.



2. Expand the scope, select Scope Options, right click on Scope Options and select Configure Options.



3. Scroll down to Option 43 and select.



4. To configure the Option 43, you will need the vendor code, the length of the Hex, and the IP Address of the Smart Zone Controller.
- The Vendor code for the Smart Zone Controller is 06.
 - The IP Address for the controller must be entered into the box in a hexadecimal format. The following URL will give you the required information:

<http://shimi.net/services/opt43/index.php>

- Here is an example where the controller IP Address is 10.10.10.200:

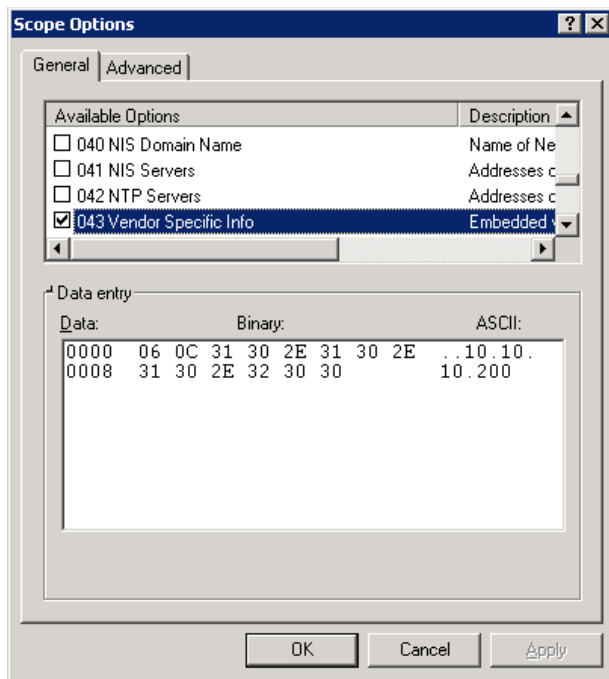
06 0C 31 30 2E 31 30 2E 31 30 2E 32 30 30

Vendor Code 06

Length

10.10.10.200

5. Enter the Vendor code and the IP Address into the Binary Area.



6. Select Apply and OK.
7. Repeat this for all the scopes that will have Access Points behind them.

Note: Option 43 does not need to be configured if the Access Points and the Controller are on the same subnet.