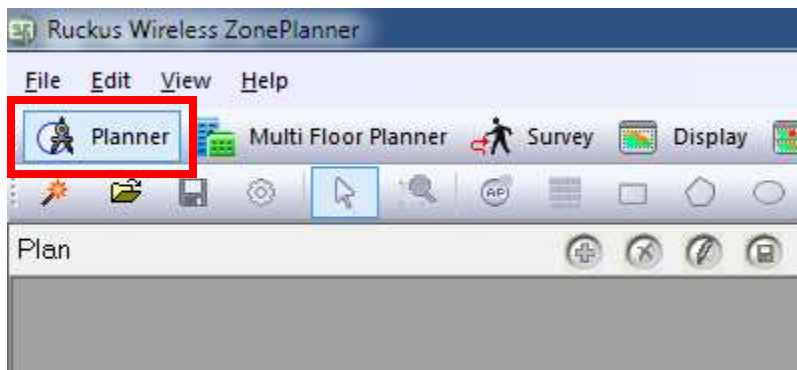


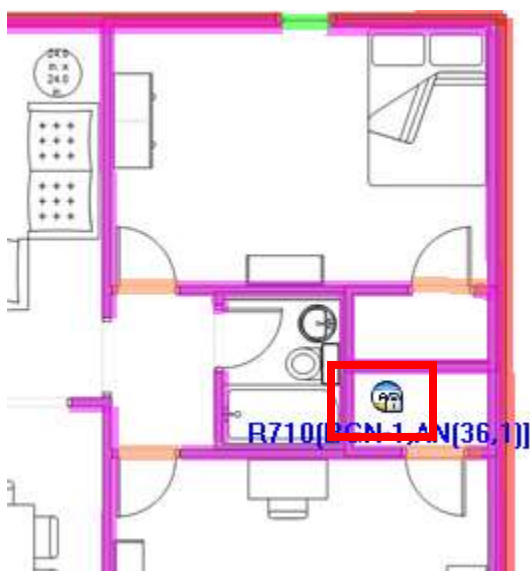
Creating AP Templates Ruckus Zone Planner Best Practices

In Ruckus Zone Planner, you add APs to your drawings to test signal strength. Having to setup the desired AP every time is a pain. This document will show you how to create and save access point templates that reflect best practices settings for current and future drawings.

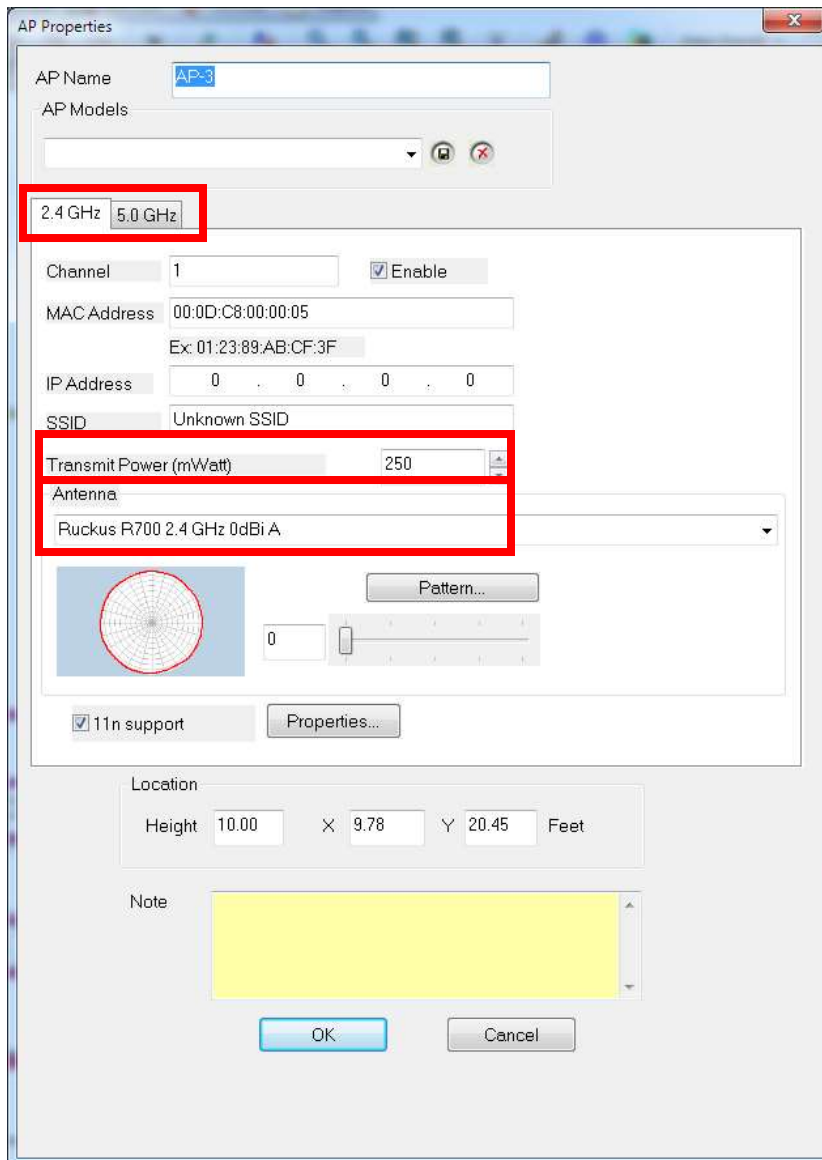
In Zone Planner, click on the Planner Button (Upper Left).



In an open project, select an access point and place it on the map.



Right click on the AP and select Properties:



There are two tabs (2.4 GHz and 5 GHz) to adjust. On each tab, we will adjust the Antenna and the transmit power.

For this example, we will create an R710 AP. On the 2.4 GHz tab, change the Transmit power to 180 and change the Antenna to Ruckus-R710 2.4GHz Az. This is an Azimuth orientation (hanging from the ceiling). It is the most commonly used orientation. If you are hanging it on a wall, use the EL (Elevation) option.

The screenshot shows the 'AP Properties' dialog box with the following configuration:

- AP Name: AP-3
- AP Models: (empty dropdown)
- Frequency: 2.4 GHz (selected, highlighted with a red box)
- Channel: 1 (with 'Enable' checked)
- MAC Address: 00:0D:C8:00:00:05 (Example: 01:23:89:AB:CF:3F)
- IP Address: 0 . 0 . 0 . 0
- SSID: Unknown SSID
- Transmit Power (mWatt): 180 (highlighted with a red box)
- Antenna: Ruckus-R710 2.4GHz Az (highlighted with a red box)
- Antenna Pattern: (Circular diagram with a 'Pattern...' button)
- 11n support: (checked)
- Location: Height 10.00, X 9.78, Y 20.45 Feet
- Note: (Yellow text area)
- Buttons: OK, Cancel

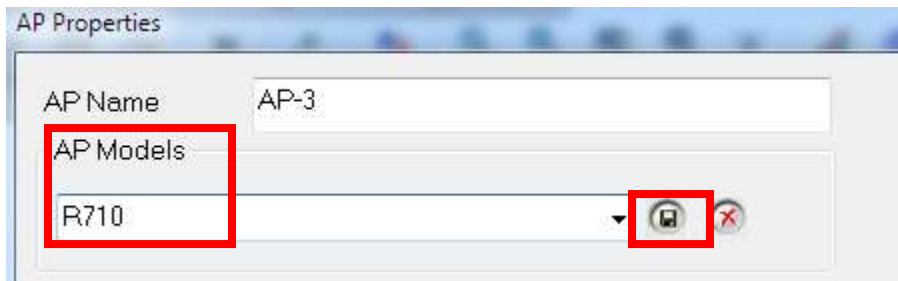
On the 5 GHz tab, change the Transmit power to 140 and change the Antenna to Ruckus-R710 5GHz Az.

The screenshot shows the 'AP Properties' dialog box with the following configuration:

- AP Name: AP-3
- AP Models: (empty dropdown)
- Frequency: 5.0 GHz (selected)
- Channel: 36
- Enable:
- MAC Address: 00:0D:C8:00:00:06
- IP Address: 0.0.0.0
- SSID: Unknown SSID
- Transmit Power (mWatt): 140
- Antenna: Ruckus-R710 5GHz Az
- Antenna Pattern: (circular diagram)
- Antenna Gain: 0
- 11n support:
- Location: Height 10.00, X 9.78, Y 20.45 Feet
- Note: (empty text area)

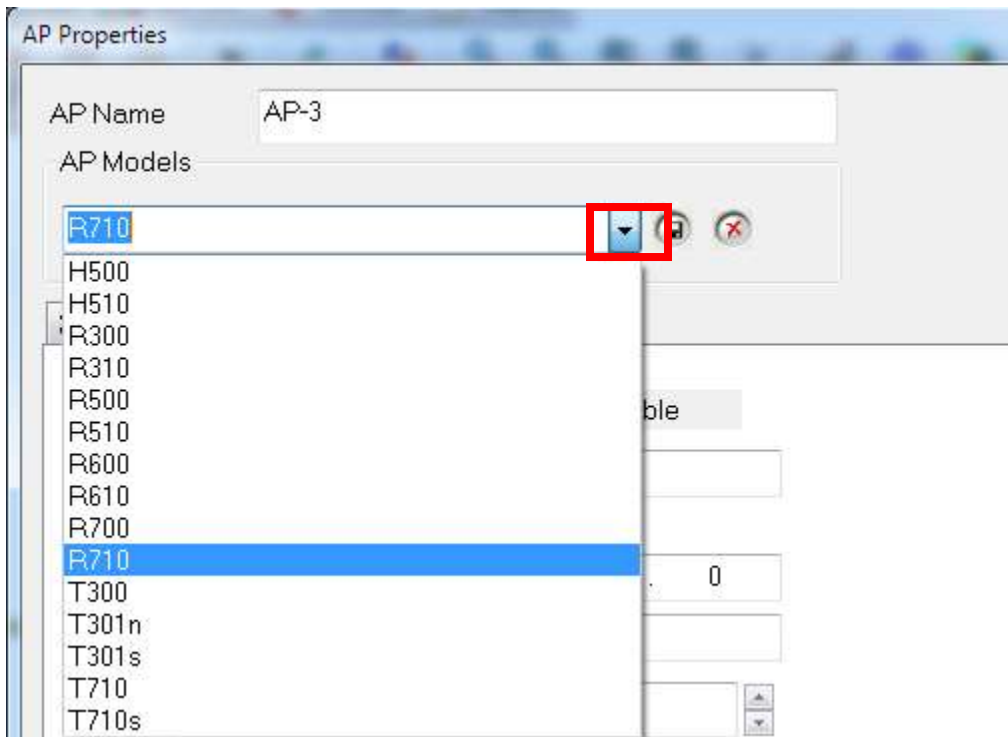
Buttons: OK, Cancel

In the AP Models Box, name this template R710 and select the save button to the right of the box.



Select OK.

You now have an R710 saved for current and future use. To see, go to the AP Properties and select the drop-down arrow next to the AP Model box.



The following table has the values for transmit power on popular APs you may want to create. Always select the AP model Antenna in the AZ orientation.

| AP | 2.4 GHz TX Power (mW) | 5 GHz TX Power (mW) |
|-------|-----------------------|---------------------|
| R710 | 180 | 140 |
| R610 | 180 | 140 |
| R600 | 180 | 140 |
| R700 | 180 | 140 |
| T300 | 180 | 140 |
| R500 | 150 | 125 |
| R510 | 150 | 125 |
| R300 | 150 | 125 |
| R310 | 100 | 100 |
| H500 | 50 | 80 |
| H510 | 50 | 80 |
| T710 | 200 | 150 |
| T710s | 250 | 200 |
| T301s | 250 | 200 |
| T301n | 250 | 200 |