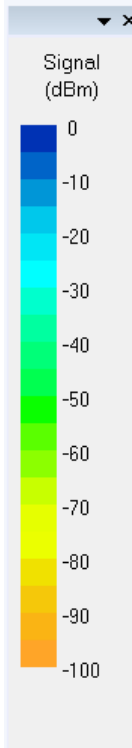


Ruckus Zone Planner

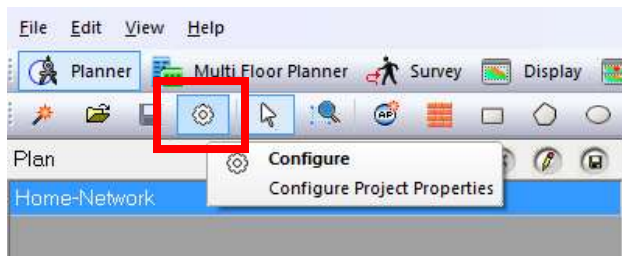
Changing the Signal Strength Color Pallet

In Zone Planner, the Signal Strength Color Pallet is used in Signal mapping to see the differences in strength between areas. The default color pallet is below. This document will show you how to change to a different pallet.

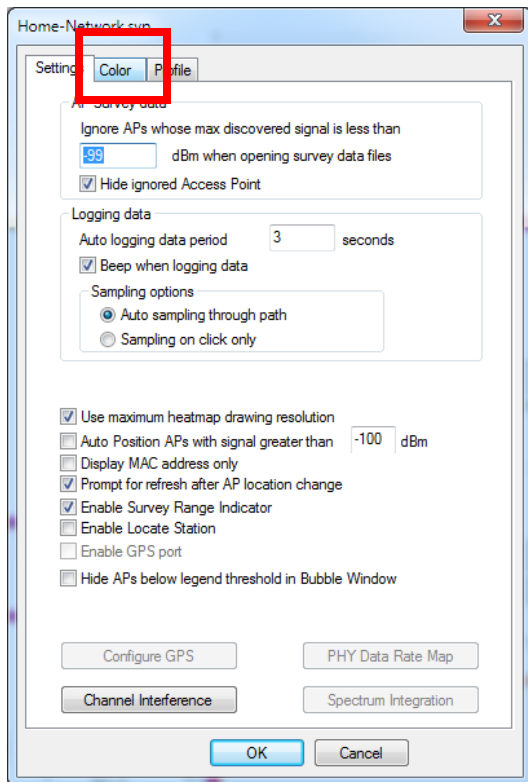


Note: To change the Pallet, you must be inside an open project to access the settings.

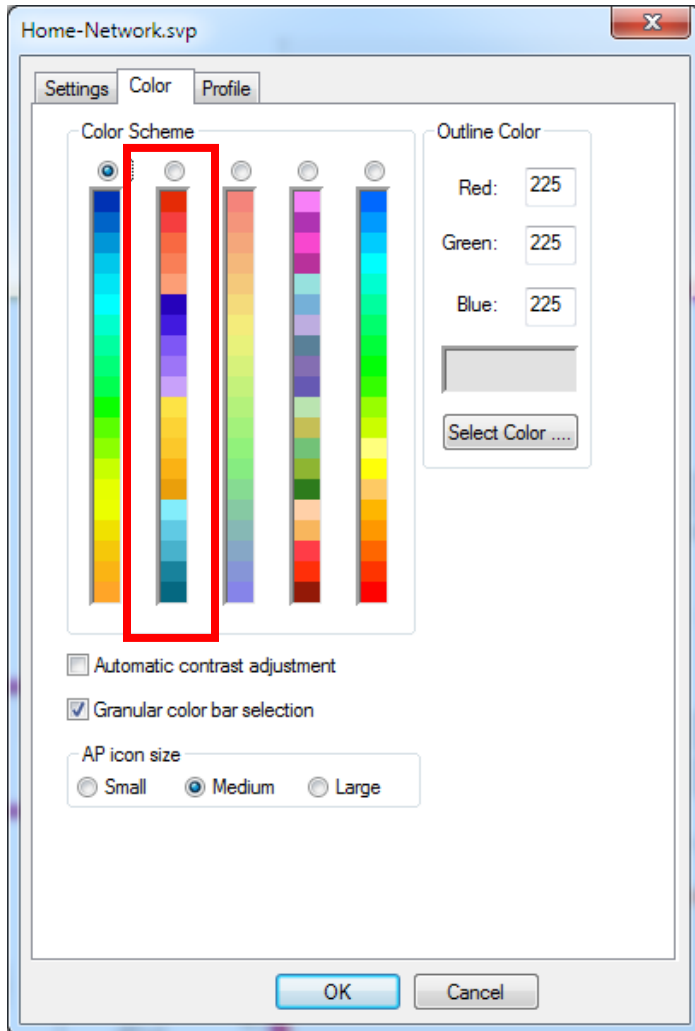
Go to File > Configure or click the Configure Button on the Ribbon:



Go to the Color Tab:



Select the Color Pallet you like. I like the second one for differentiation between blocks of signal change.



Here is your new Pallet:

