

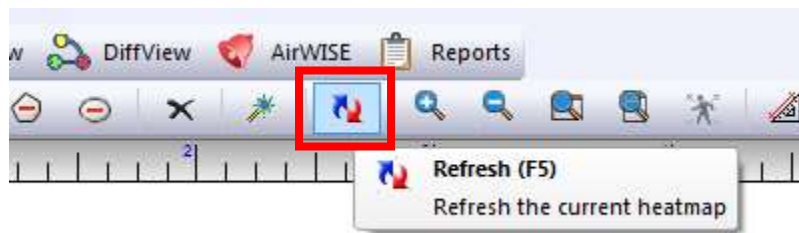
Adjusting Signal Strength on Heat Maps

Ruckus Zone Planner

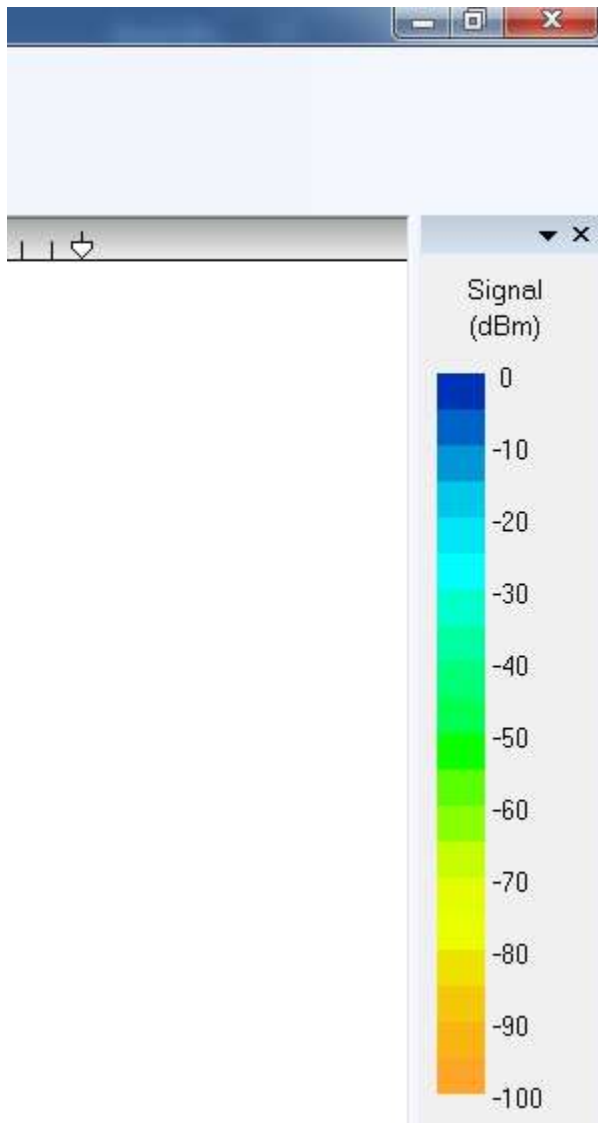
Best Practices

In Ruckus Zone Planner, when you create a heat map, signal strength is depicted by color variations on the screen. As a best practice, we want to do our maps at a maximum of -65 dBm on 5 GHz. This document will show you how to configure this for optimal results.

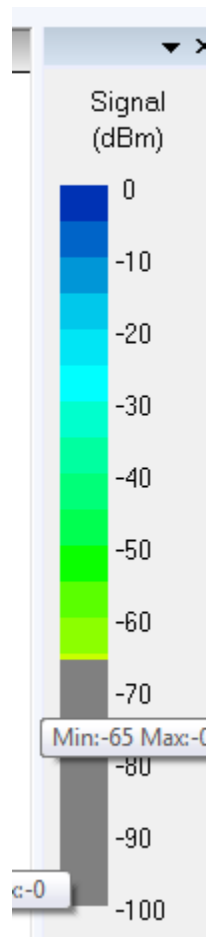
In an open project, with walls drawn and APs on the map, select the refresh button to display the heat map.



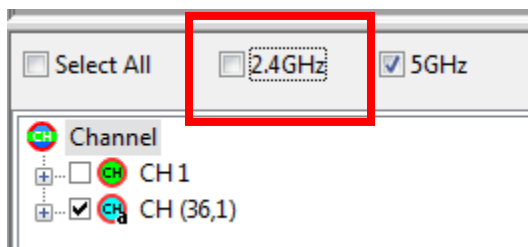
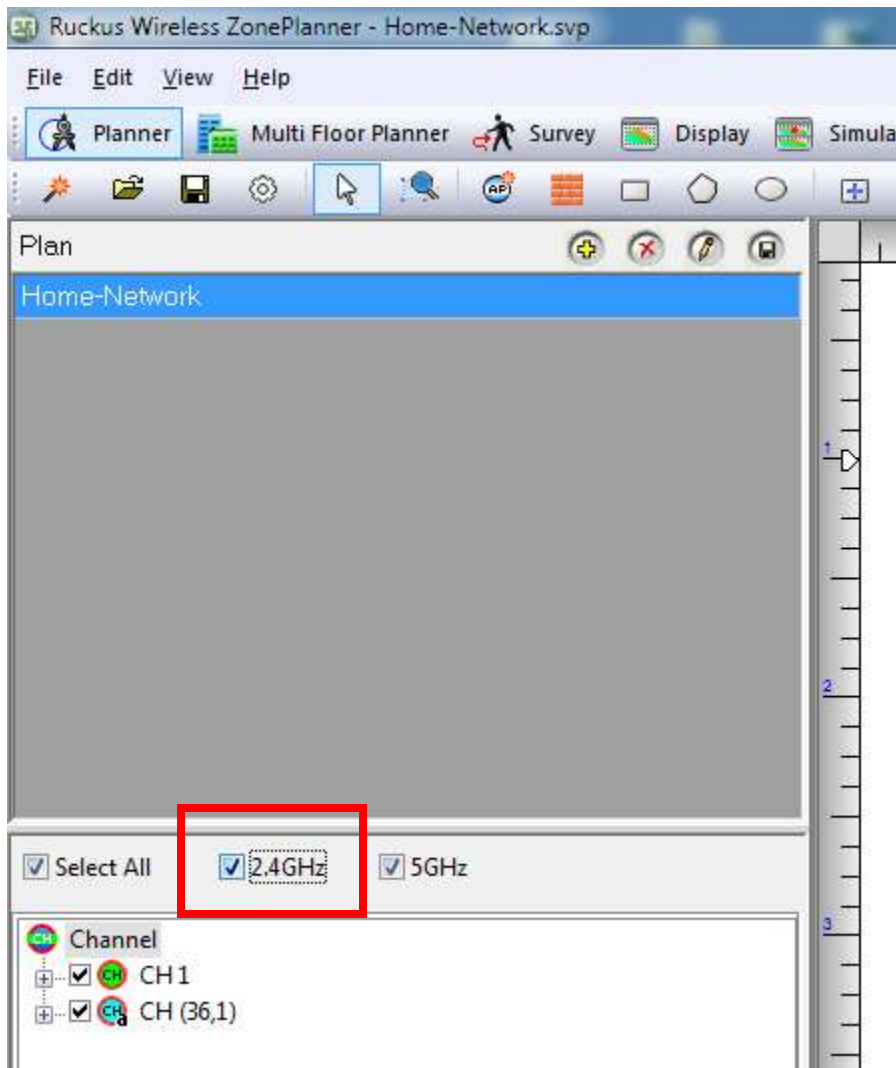
On the right side of the application there is a signal strength meter. When you move the cursor over the meter, it turns into a hand pointing up.



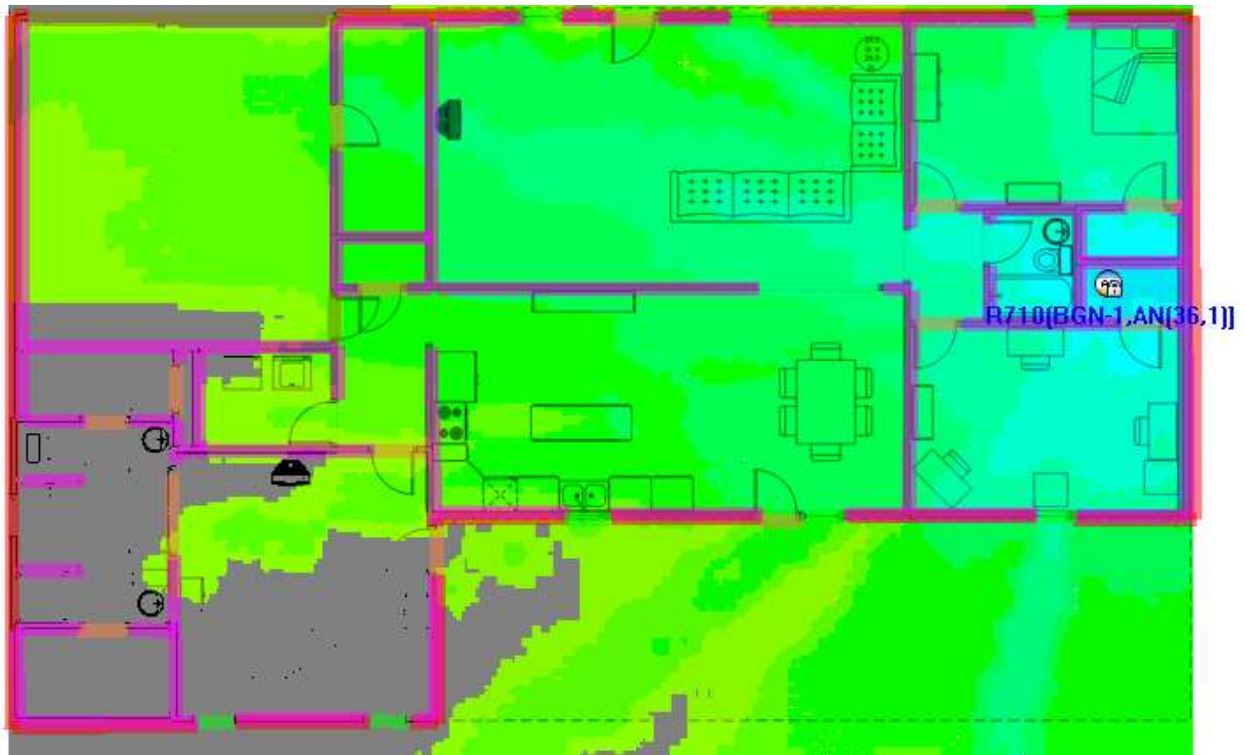
With the hand at the bottom of the meter, hold down a left click and slide the bar up to -65 dBm.



On the Left side of the application, de-select the 2.4 GHz check box to remove it from the heat map.



Now your heat map will reflect the -65dBm on 5 GHz.



Notice the difference from the map at the top of the document.