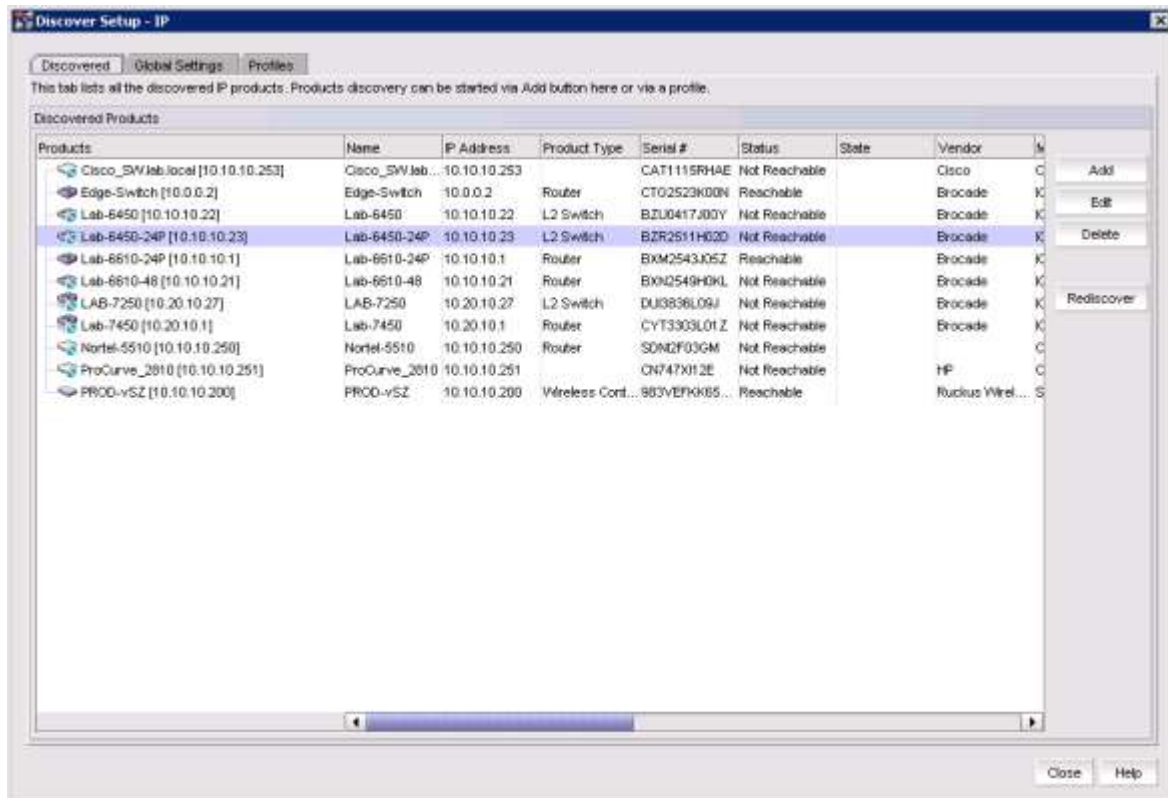


# Correcting Authentication problems in BNA after a Discovery

Open BNA and go to the IP Tab.

Go to Discover > IP Products



Select the first switch and then "Shift" Select the last Switch:

Then Select the Edit button

The screenshot shows the 'Discover Setup - IP' window. It has tabs for 'Discovered', 'Global Settings', and 'Profiles'. Below the tabs, there is a text instruction: 'This tab lists all the discovered IP products. Products discovery can be started via Add button here or via a profile.' Below this is a table titled 'Discovered Products' with columns: Products, Name, IP Address, Product Type, Serial #, Status, State, Vendor, and M. The table contains 10 rows of data. To the right of the table is a vertical toolbar with buttons: 'Add', 'Edit', 'Delete', and 'Rediscover'. The 'Edit' button is highlighted with a red rectangular box. At the bottom right of the window are 'Close' and 'Help' buttons.

Products	Name	IP Address	Product Type	Serial #	Status	State	Vendor	M
Cisco_SW.lab.local [10.10.10.253]	Cisco_SW.lab...	10.10.10.253		CAT1115RHAЕ	Not Reachable		Cisco	C
Edge-Switch [10.0.0.2]	Edge-Switch	10.0.0.2	Router	CTG2523K00N	Reachable		Brocade	K
Lab-6450 [10.10.10.22]	Lab-6450	10.10.10.22	L2 Switch	BZU0417J00Y	Not Reachable		Brocade	K
Lab-6450-24P [10.10.10.23]	Lab-6450-24P	10.10.10.23	L2 Switch	BZR2511H02D	Not Reachable		Brocade	K
Lab-6610-24P [10.10.10.1]	Lab-6610-24P	10.10.10.1	Router	BXM2543J05Z	Reachable		Brocade	K
Lab-6610-48 [10.10.10.21]	Lab-6610-48	10.10.10.21	Router	BXN2549H0KL	Not Reachable		Brocade	K
LAB-7250 [10.20.10.27]	LAB-7250	10.20.10.27	L2 Switch	DUI3836L09J	Not Reachable		Brocade	K
Lab-7450 [10.20.10.1]	Lab-7450	10.20.10.1	Router	CYT3303L01Z	Not Reachable		Brocade	K
Nortel-5510 [10.10.10.250]	Nortel-5510	10.10.10.250	Router	SDN12F03GM	Not Reachable			C
ProCurve_2810 [10.10.10.251]	ProCurve_2810	10.10.10.251		CN747X112E	Not Reachable		HP	C
PROD-vSZ [10.10.10.200]	PROD-vSZ	10.10.10.200	Wireless Cont...	983VEFKK65...	Reachable		Ruckus Wirel...	S

Select the Read/Write Credentials Tab:

**Edit product**

IP Address

- SNMP v3 Read/Write
- SNMP v3 Read Only
- SNMP v1/v2c Read/Write
- SNMP v1/v2c Read Only
- Read/Write Credentials**
- Port Config Credentials
- Read Only Credentials

User ID: MIXED

Authentication Protocol: MIXED

Authentication Password: MIXED  Show Password

Privacy Protocol: MIXED

Privacy Password: MIXED  Show Password

OK Cancel Help

Enter the information:

**Edit product**

IP Address

- SNMP v3 Read/Write
- SNMP v3 Read Only
- SNMP v1/v2c Read/Write
- SNMP v1/v2c Read Only
- Read/Write Credentials**
- Port Config Credentials
- Read Only Credentials

Super-User Password: MIXED  Show Password

Login Prompt User Name: MIXED

Login Prompt Password: MIXED  Show Password

Enable Prompt User Name

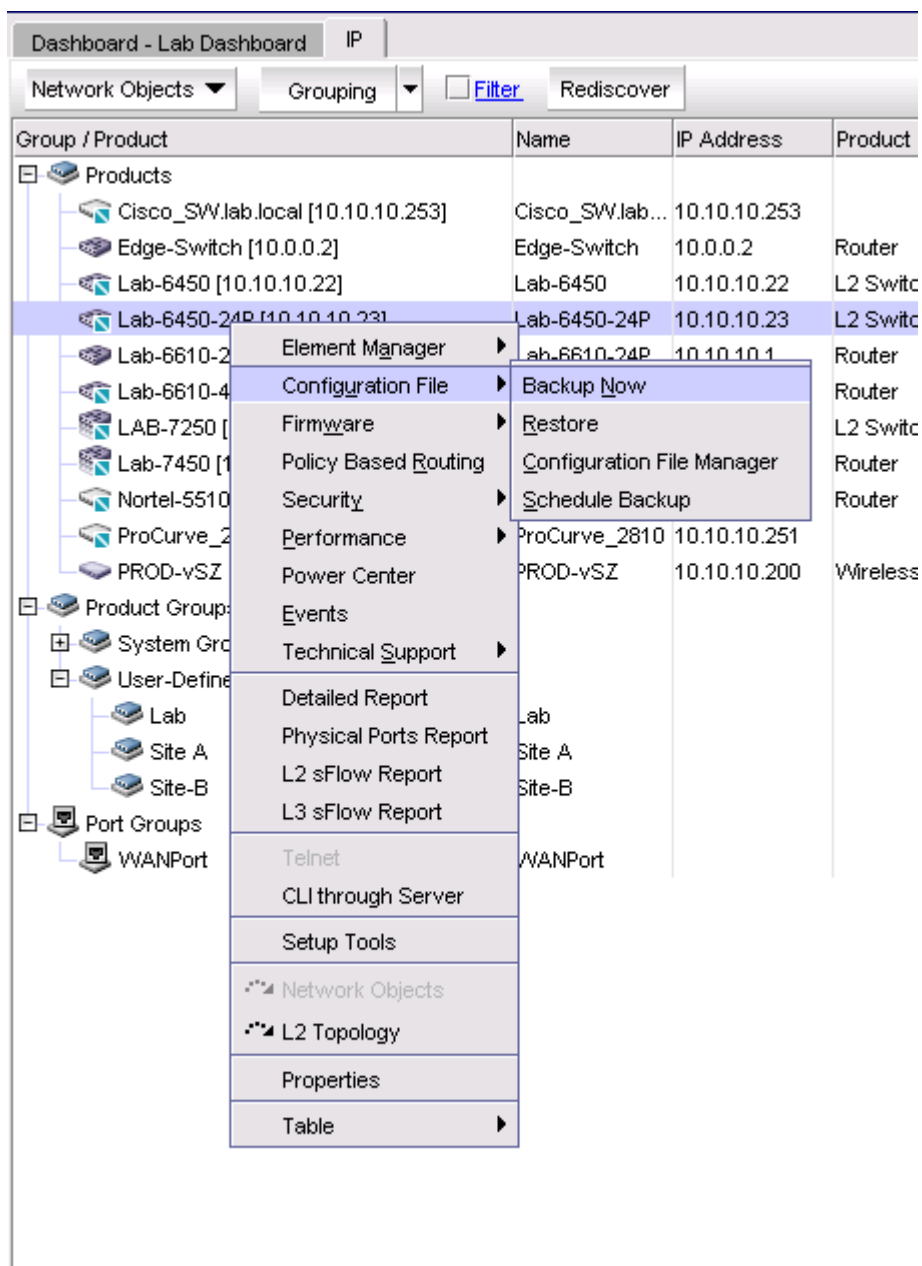
Enable Prompt Password  Show Password

OK Cancel Help

Select OK

Select Close

Run a backup to test. Right click on a switch and go to Configuration > Backup Now



Your Back should run successfully!